



**TSUBAKI**<sup>®</sup>

**WORKHORSE™ Series**

**Elevator Chains**

[www.ustsubaki.com](http://www.ustsubaki.com)

# Tsubaki WORKHORSE Ele

## An Industry Standard of Legendary Heritage

Tsubaki WORKHORSE™ elevator chains are specifically designed for use within aggressive bulk material handling environments with harsh fine particulates such as cement, lime, gypsum, salt and potash. Leveraging Tsubaki's extensive heritage within the aggregate segment along with a proprietary blend of premium domestic steels and refined heat treatments, the WORKHORSE Series was uniquely bred to provide superior strength, maximum toughness and legendary dependability.

## Ultimate Strength

Tsubaki's WORKHORSE elevator chains are manufactured with specially selected, premium, high strength steels. Utilizing these specially selected materials and a portfolio of well refined proprietary manufacturing processes; Tsubaki WORKHORSE is able to achieve a premier ultimate strength rating, far exceeding many rival designs.



## Unparalleled Toughness & Wear Resistance

The Tsubaki WORKHORSE is in a league of its own when it comes to wear resistance and toughness. Utilizing an exclusive and precisely refined series of heat treatments, WORKHORSE was born a little tougher; specifically to resist the abrasive and demanding forces of aggregate elevators.

## Innovative Protection

Depending on the specific application, Tsubaki actively maintains an extensive portfolio of premium upgrades such as plated pins/bushings, and patented joint seals. These features can typically be incorporated individually or in combination. Please contact Tsubaki Engineering for assistance in selecting the correct features for your specific application.

### TENSILE STRENGTH RATINGS

5800 Series	Average Tensile Strength (ATS)
WKHORSE-5856K24L2	145,000
WKHORSE-5856K3L2	145,000
WKHORSE-5856K35L2	145,000
WKHORSE-5857K44L2	174,000
WKHORSE-5859K44L2	264,000
WKHORSE-5864K443L2	275,000

5900 Series	Average Tensile Strength (ATS)
WKHORSE-5956K24L2	160,000
WKHORSE-5956K3L2	206,000
WKHORSE-5956K35L2	285,000

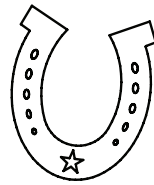
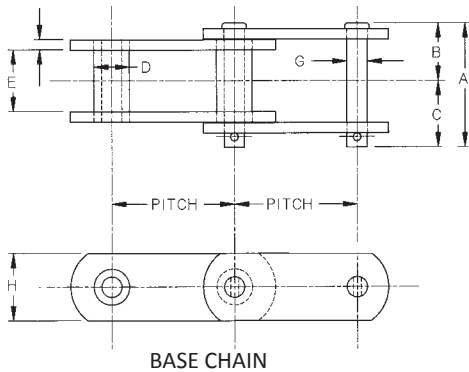
# erator Chain - Bred for Superior Stren

## WORKHORSE 5800 Series Detail

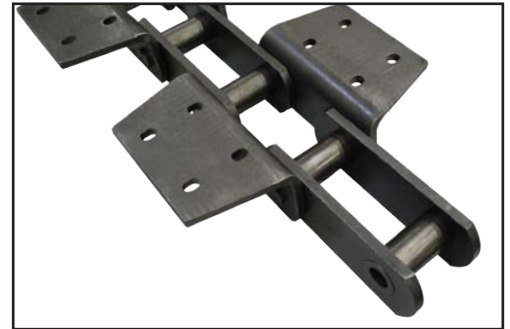
WORKHORSE 5800 SERIES	PITCH	ATTACHMENT	ATTACHMENT SPACING	WIDTH				BUSHING	PIN	SIDEBARS	
				A	B	C	E			D	H
WKHORSE-5856K24L2	6.00	K24	L2	6.00	2.78	3.22	3.00	1.75	1.00	2.50	0.50
WKHORSE-5856K3L2	6.00	K3	L2	6.00	2.78	3.22	3.00	1.75	1.00	2.50	0.50
WKHORSE-5856K35L2	6.00	K35	L2	6.00	2.78	3.22	3.00	1.75	1.00	2.50	0.50
WKHORSE-5857K44L2	6.00	K44	L2	6.00	2.78	3.22	3.00	1.75	1.00	3.25	0.50
WKHORSE-5859K44L2	6.00	K44	L2	7.25	3.41	3.84	3.75	2.38	1.25	4.00	0.63
WKHORSE-5864K443L2	7.00	K443	L2	7.25	3.41	3.84	3.75	2.38	1.25	4.00	0.63

## WORKHORSE 5900 Series Detail

WORKHORSE 5900 SERIES	PITCH	ATTACHMENT	ATTACHMENT SPACING	WIDTH				BUSHING	PIN	SIDEBARS	
				A	B	C	E			D	H
WKHORSE-5956K24L2	6.00	K24	L2	6.00	2.78	3.22	3.00	1.75	1.00	3.00	0.50
WKHORSE-5958K44L2	6.00	K44	L2	6.13	2.84	3.29	3.00	2.00	1.19	3.38	0.56/0.50
WKHORSE-5984K443L2	7.00	K443	L2	7.25	3.41	3.84	3.75	2.50	1.38	4.00	0.63



**WORKHORSE**



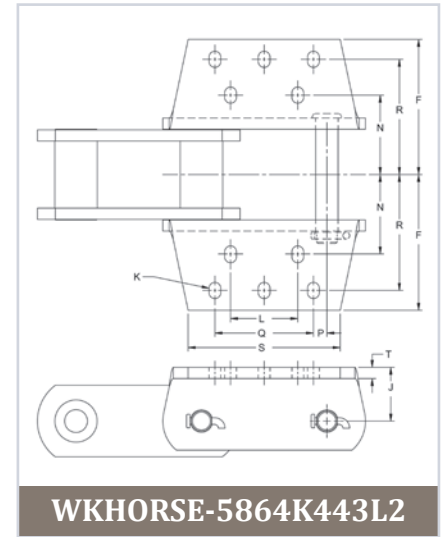
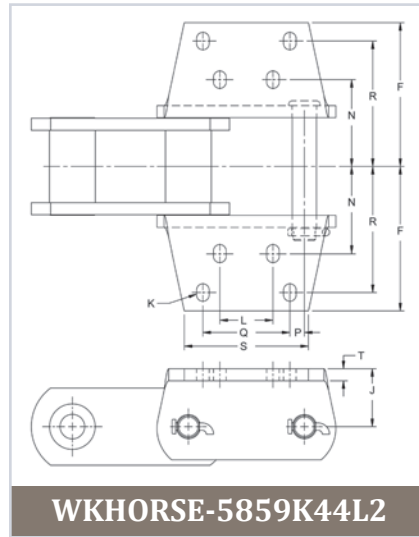
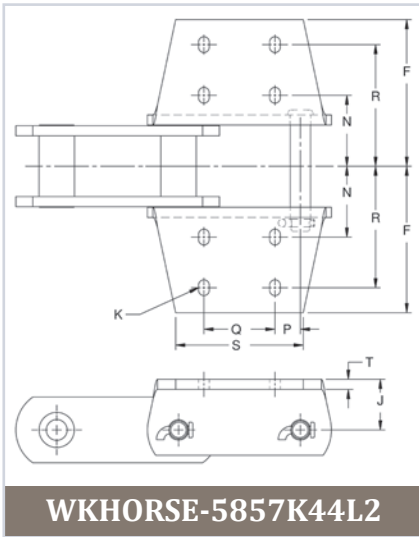
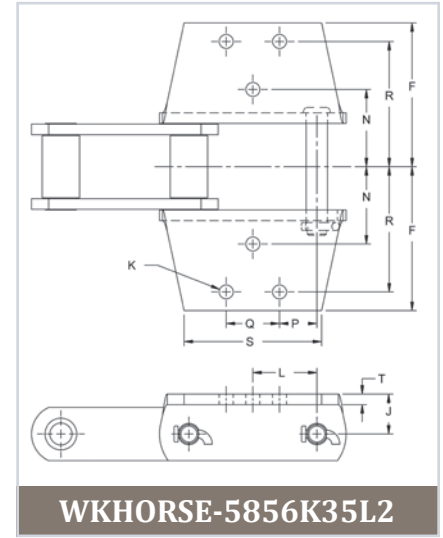
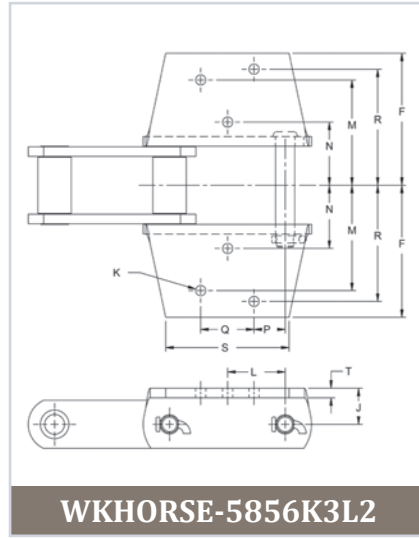
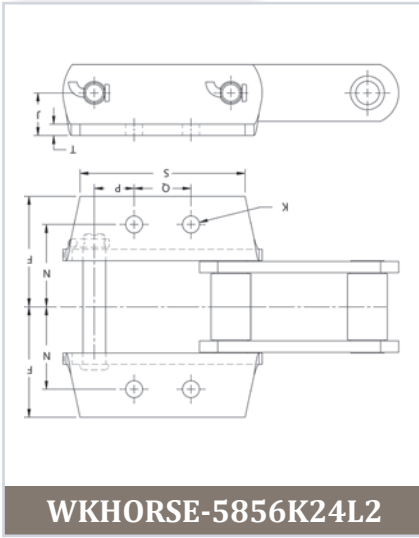
## WORKHORSE Attachment Detail

PART NUMBER	ATTACHMENT	DIMENSION											EST WEIGHT (lbs/ft)
		N	M	R	F	L	Q	S	P	K (BOLT)	J	T	
WKHORSE-5856K3L2	K3	3.28	5.47	6.03	6.86	3.00	2.75	6.40	1.63	0.50	1.88	0.50	26.0
WKHORSE-5856K24L2	K24	3.62			4.86		2.50	7.25	1.75	0.63	1.88	0.50	22.0
WKHORSE-5956K24L2		3.62			4.86		2.50	7.25	1.75	0.63	1.88	0.50	23.0
WKHORSE-5856K35L2	K35	3.63		5.88	6.75	3.00	2.50	6.45	1.75	0.63	1.88	0.50	26.0
WKHORSE-5857K44L2	K44	3.50		6.00	7.25		3.50	6.29	1.25	0.50	2.50	0.50	31.0
WKHORSE-5859K44L2		4.50		6.50	7.50	2.75	4.50	6.42	0.75	0.63	3.00	0.63	48.0
WKHORSE-5958K44L2		3.50		6.00	6.91		3.50	6.66	1.25	0.50	2.50	0.50	32.0
WKHORSE-5864K443L2	K443	4.50		6.50	7.67	3.75	5.50	8.48	0.75	0.63	3.00	0.63	48.0
WKHORSE-5984K443L2		4.50		6.50	7.55	3.75	5.50	8.48	0.75	0.63	3.00	0.63	47.0

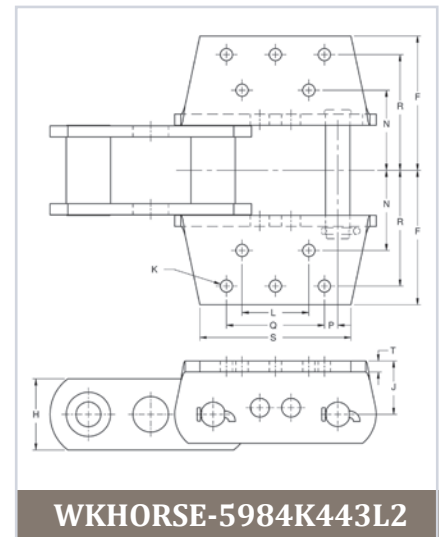
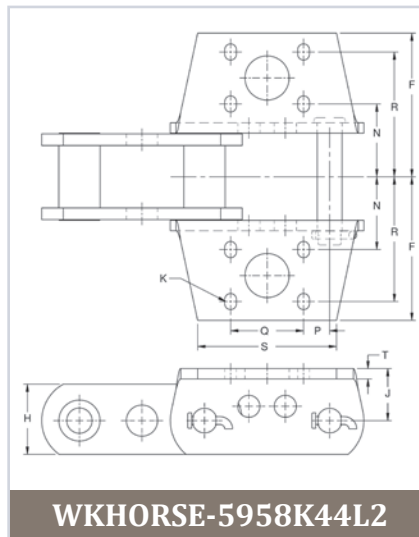
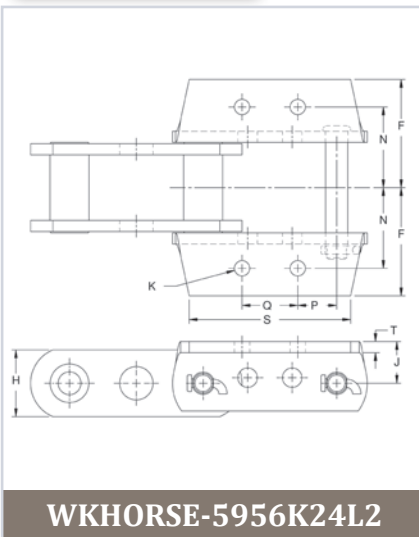
**Notes:** All Dimensions in Inches; Shaded Items Stocked for Quick Shipment

# Strength and Ultimate Durability

## 5800 Series



## 5900 Series



# Tsubaki's Patented Sealed Joint Chain

## 1. Extended Bushing Barrier Seal:

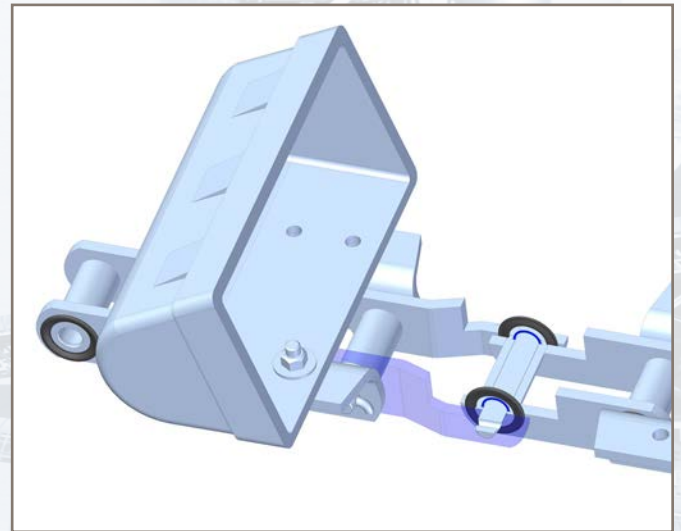
The chain bushings are extended beyond the inside sidebars to minimize the clearance between the outside bars and the bushings. This in turn creates a solid barrier that inhibits abrasive material from entering the pin/bushing joint.

## 2. Polymer Wide Face Seal:

Constructed of a high temperature engineered polymer, this seal encircles the extended bushing and provides an additional particulate resistant barrier to help protect the joint and minimize contamination.

## 3. Stainless Steel Internal Ring Seal:

This patented seal holds tight onto the pin and rotates within a groove in the bushing, creating a labyrinth to help prevent debris from getting into the pin/bushing area.



Proven performance in harsh environments such as:

- Cement
- Clay
- Gypsum
- Coke/Carbon
- Coal
- Fertilizer
- Sugar
- Potash
- Grain

**SJ3**<sup>TM</sup>

# Complete Solutions for Elevator Applications

Build reliability into your system with sprockets and power transmission components from U.S. Tsubaki.



## **SMART TOOTH® Sprockets**

Tsubaki's SMART TOOTH sprockets with patented Wear Indicator technology offer users the ability to identify and schedule drive system maintenance before critical component failure occurs. The result is extended chain life and reduced downtime for increased productivity. Tsubaki's long history of designing innovative chain and sprocket products assures you will receive the best system solution.



## **ONE-TOUCH INSPECTION DOORS®**

Save time and money with Tsubaki's One-Touch Inspection Doors. Tsubaki's patented prefabricated units are, economical, in stock and easy to install.

- Available in carbon or stainless steel
- Dust and rain tight
- Polyethylene, Epichlorohydrin and Silicon gaskets available
- Lockable



## **Backstops and Clutches**

Tsubaki's complete and versatile offering of one-way clutch products sets the standard for the industry. Whether your application calls for indexing, general over-running, or backstopping type units, Tsubaki has you covered. Incorporating Tsubaki clutch products offers a simple and cost effective means to drive and protect capital equipment that is critical to your operation. These innovative products can be used in conveyor, hoist, bucket elevator, pumping systems, and dual drive systems to improve efficiency and protect your operation.



Corporate Headquarters  
U.S. Tsubaki Power Transmission, LLC  
301 E. Marquardt Drive  
Wheeling, IL 60090  
Tel: (800) 323-7790  
[www.ustsubaki.com](http://www.ustsubaki.com)



Roller Chain Division  
821 Main Street  
Holyoke, MA 01040  
Tel: (800) 323-7790



Conveyor and Construction  
Chain Division  
1010 Edgewater Drive  
Sandusky, OH 44870  
Tel: (800) 537-6140



Sprocket Manufacturing  
Mississauga, Ontario  
Tel: (800) 323-7790



KabelSchlepp Division  
7100 W. Marcia Rd  
Milwaukee, WI 53223  
Tel: (800) 443-4216

Note: In accordance with the policy of U.S. Tsubaki Power Transmission, LLC to consistently improve its products, the specifications in this brochure are subject to change without notice. The logos, brand names or product names in this brochure are trademarks or registered trademarks of Tsubakimoto Chain Co. and its subsidiaries in Japan, the U.S. and other countries.

ONE-TOUCH INSPECTION DOOR® is a registered trademark of Tsubaki Conveyor of America  
© 2017 U.S. Tsubaki Power Transmission, LLC. All Rights Reserved Printed in U.S.A.  
03/17 Rev. 1 L13026